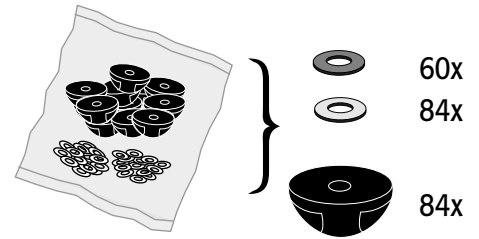
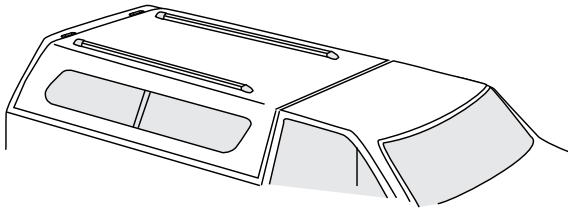


YAKIMA Cap hardware FOR TRACKS

Due to shell thickness variances, mounting bolts are not included with this kit and need to be purchased separately. Use a stainless steel, buttonhead, 10/32" screw in the desired length.

TOOLS REQUIRED:
power drill
1/8" drill bit
1/4" drill bit



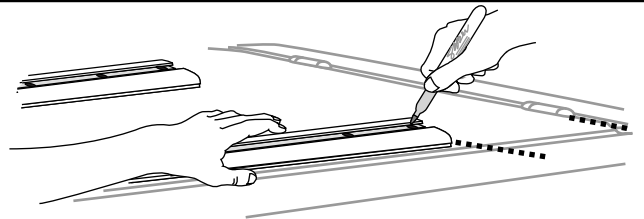
IMPORTANT WARNING!

IT IS CRITICAL THAT ALL YAKIMA RACKS AND ACCESSORIES BE PROPERLY AND SECURELY ATTACHED TO YOUR VEHICLE. IMPROPER ATTACHMENT COULD RESULT IN AN AUTOMOBILE ACCIDENT, AND COULD CAUSE SERIOUS BODILY INJURY OR DEATH TO YOU OR TO OTHERS. YOU ARE RESPONSIBLE FOR SECURING THE RACKS AND ACCESSORIES TO YOUR CAR, CHECKING THE ATTACHMENTS PRIOR TO USE, AND PERIODICALLY INSPECTING THE PRODUCTS FOR ADJUSTMENT, WEAR, AND DAMAGE. THEREFORE, YOU MUST READ AND UNDERSTAND ALL OF THE INSTRUCTIONS AND CAUTIONS SUPPLIED WITH YOUR YAKIMA PRODUCT PRIOR TO INSTALLATION OR USE. IF YOU DO NOT UNDERSTAND ALL OF THE INSTRUCTIONS AND CAUTIONS, OR IF YOU HAVE NO MECHANICAL EXPERIENCE AND ARE NOT THOROUGHLY FAMILIAR WITH THE INSTALLATION PROCEDURES, YOU SHOULD HAVE THE PRODUCT INSTALLED BY A PROFESSIONAL INSTALLER SUCH AS A QUALIFIED GARAGE OR AUTO BODY SHOP.

1 Align tracks to each other and position track ends equal distance from rear of shell.

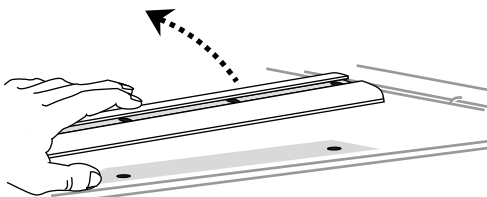


2 Using a marker pen, outline alternate holes through the track. Begin with first or last hole, and skip every other hole.



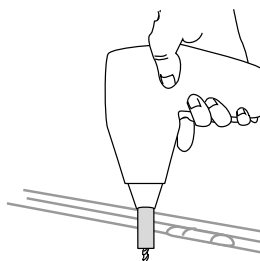
! CAUTION: Track base can slide. Be sure it is aligned to the track!

3 Remove track from shell.

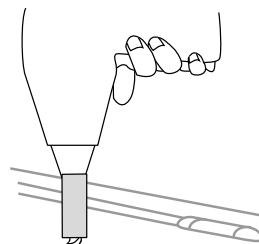


! NEVER DRILL THROUGH TRACK!

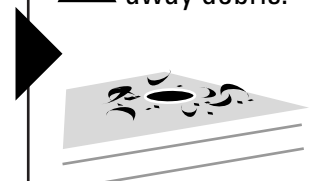
4 Drill 1/8" pilot holes in center of marks.



5 Drill 1/4" into pilot holes.



! Carefully blow away debris.

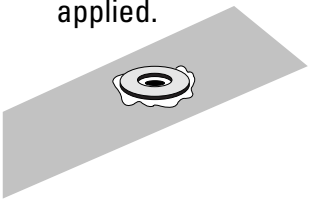


6 Apply a generous amount of silicone sealant into the drilled holes.



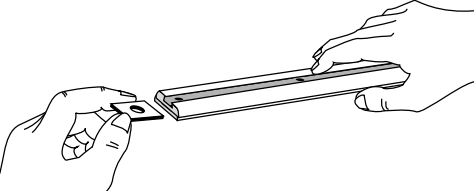
WARNING: Direct contact of uncured sealant irritates eyes and may irritate skin. Overexposure to vapor may irritate eyes, nose and throat. Avoid eye and skin contact. Use with adequate ventilation. Do not handle contact lenses with sealant on hands. In case of eye contact, flush with water for 15 minutes. Obtain medical attention. In case of skin contact, remove from skin and flush with water. Sealant releases acetic acid (vinegar-like odor) during cure.

7 Place large, white nylon washer onto holes to which silicone has been applied.

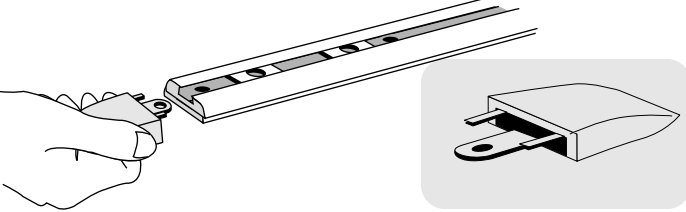


Note: Washer should be flat against drilled hole.

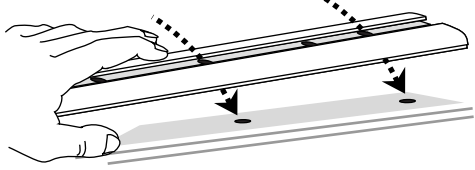
8 Slide nut plates from your tower kit into track (2 per tower/4 per track).



9 Attach end caps before attaching tracks to roof.



10 Place track on roof.

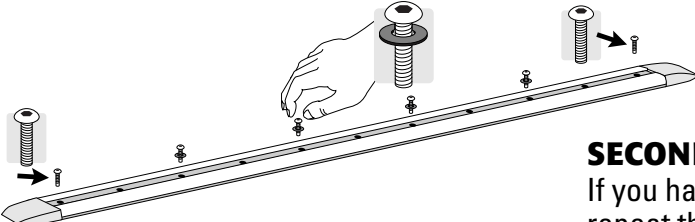


!

Be sure to align track holes to holes in base and in roof.

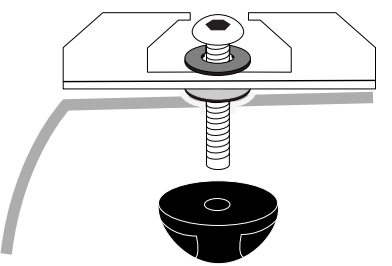
11 Install bolts and small black nylon washers into track and into roof.

NOTE: Do not use these washers on bolts at each end of tracks.

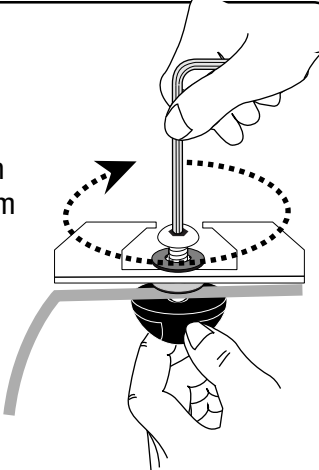


SECOND TRACK INSTALLATION:
If you have not installed the second track, repeat the entire instruction beginning at step 1.

12 From inside your shell, attach the cap nut.



13 Tighten the bolts through the track from above. A helpful friend will make this easier.



!

Load limits are determined by shell roof strength. Contact your shell manufacturer for details.

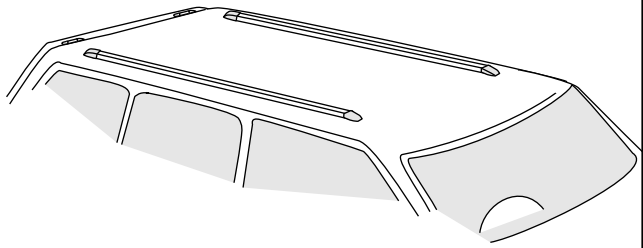
Some deflection may occur with any significant load.

Serious off-highway driving may also cause deflection.

LIMITED WARRANTY

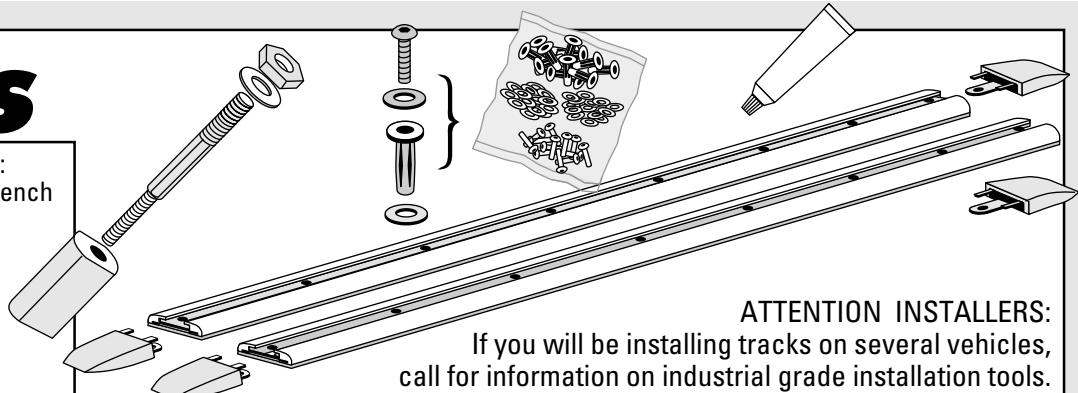
Yakima Products ("Yakima") will repair or replace merchandise which proves defective in materials and/or workmanship. The limited warranty is effective for three years from the date of purchase. The limited warranty is applicable only if the Fit List and instructions are followed and the products are used properly. If a customer believes that a Yakima product is defective, the customer must return it to an authorized Yakima dealer with proof of purchase. Yakima will then issue authorization to the dealer for the return of these products. If an article is found to be defective upon inspection by Yakima, Yakima will repair or replace the defective article at its discretion without charge. The customer will pay freight to Yakima, and Yakima will pay any applicable return freight. Unauthorized returns will not be accepted. Normal wear and tear of Yakima products or damage resulting from misuse, accidents, or alterations are not covered by this Limited Warranty. The purchaser acknowledges that Yakima has no control over the attachment of its products to vehicles or the attachment of items to the Yakima products. Accordingly, Yakima cannot assume responsibility for any damage to any property arising out of the improper attachment or use of its products. In addition, this Limited Warranty applies only to Yakima products and not to other products used in conjunction with Yakima products. This Limited Warranty is in lieu of all other warranties, expressed or implied, and does not cover consequential damages of any kind that may arise from the use or misuse of any Yakima product.

YAKIMA Tracks



Part #1030988 Rev.C

TOOLS REQUIRED:
 adjustable end wrench
 1/2" wrench
 1/8" Allen wrench
 center punch
 hammer
 electric drill
 1/8" drill bit
 9/32" drill bit
 touch-up paint



ATTENTION INSTALLERS:
 If you will be installing tracks on several vehicles,
 call for information on industrial grade installation tools.
 YAKIMA CUSTOMER SERVICE: 888-925-4621

REFER TO THE TRACK FIT SHEET for track placement and important details about your vehicle!

1 Align tracks and position track ends according to information in the track fit sheet.

2 Outline rear hole through track.

! Track base is loose and can slide. Be sure it is aligned to track.

3 Remove track.

4 Punch center of mark for drilling.

! DO NOT DRILL DEEPER THAN 1/4". Use a drill stop to prevent drilling through vehicle's interior liner. If you do not have a stop, use tape and mark bit 1/4" from tip.

Wear goggles when drilling!

5 Drill 1/8" pilot hole

6 Drill 9/32" hole

! Carefully blow away debris

7 Seal edges of hole with enamel base paint. Allow to dry.

8 Attach soft rubber washers onto Plusnuts®.

Note: Washer should be flat against Plusnut® head.

Attach Plusnut® and washer to tool as shown.

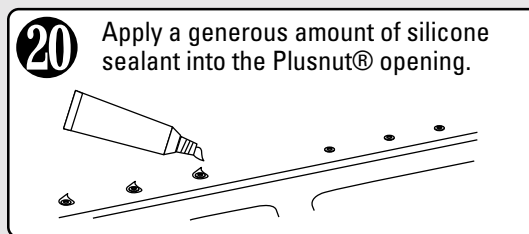
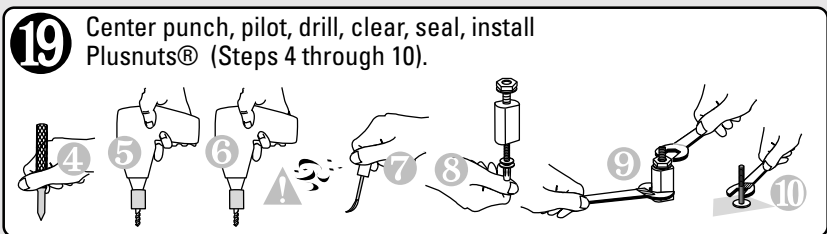
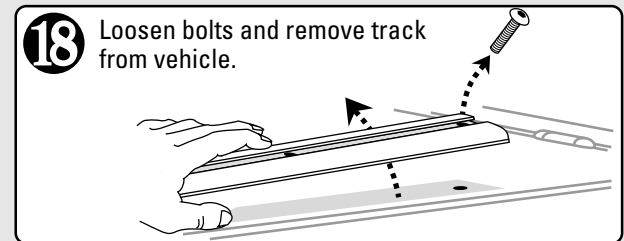
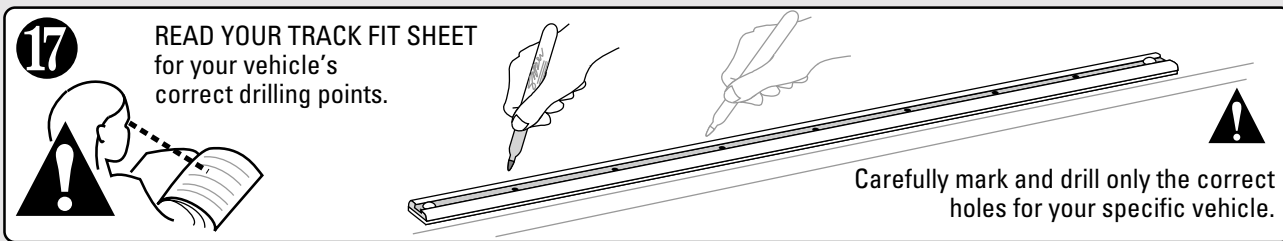
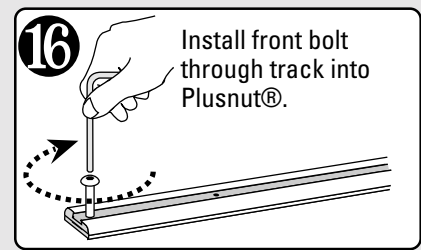
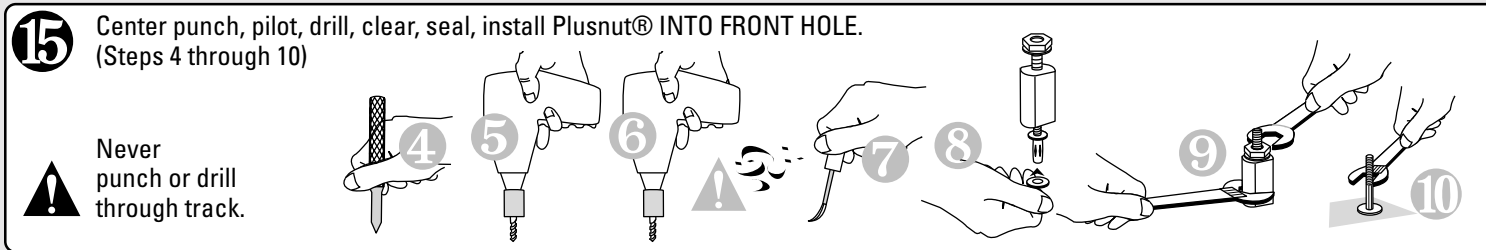
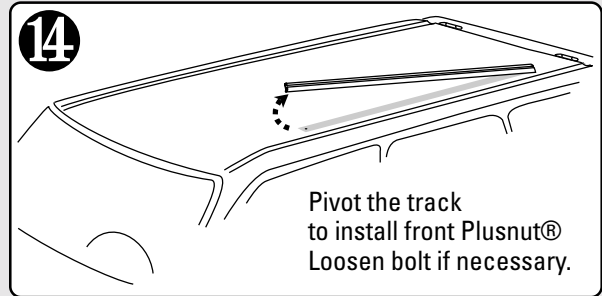
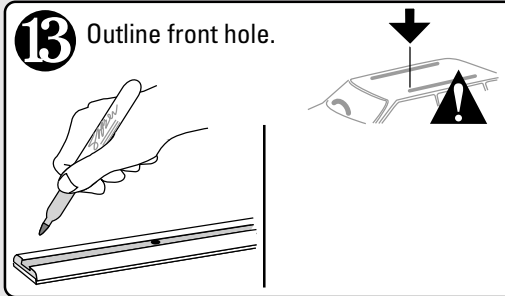
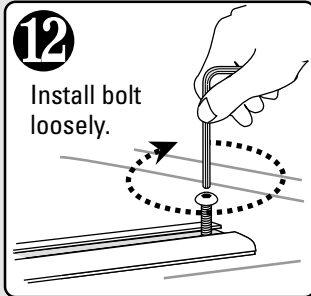
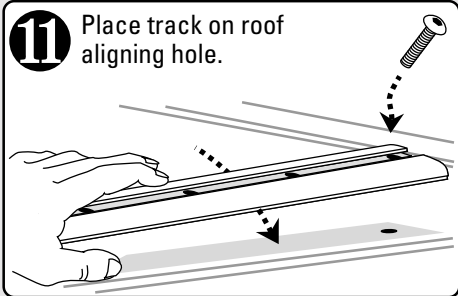
Attach nut with washer onto Plusnut® tool.

9 Set into hole.

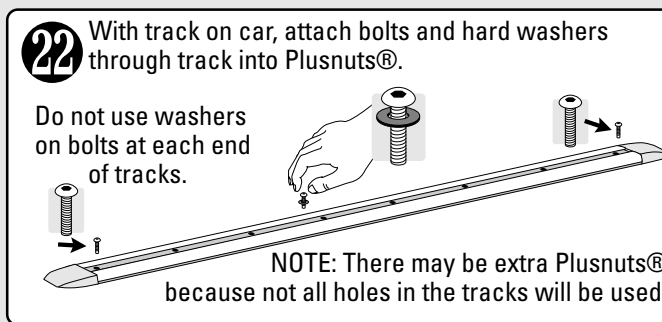
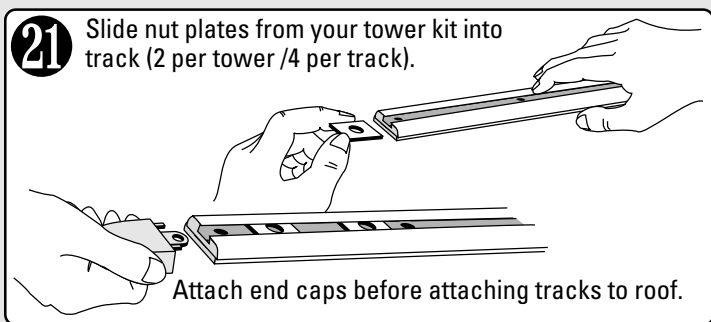
Tighten nut on tool using 1/2" wrench and adjustable end or 7/16" wrench.

10 Remove flaring tool: Use adjustable end wrench to unscrew post from Plusnut®.

! Reassemble tool for next Plusnut®.



WARNING: Direct contact of uncured sealant irritates eyes and may irritate skin. Over exposure to vapor may irritate eyes, nose and throat. Avoid eye and skin contact. Use with adequate ventilation. Do not handle contact lenses with sealant on hands. In case of eye contact, flush with water for 15 minutes. Obtain medical attention. In case of skin contact, remove from skin and flush with water. Sealant releases acetic acid (vinegar-like odor) during cure.



SECOND TRACK INSTALLATION: Repeat entire instruction beginning at **1**

